



**TERRY FOREMAN**  
 District Governor, 18-C  
 Council International  
 Convention Chairman  
*1990-91*

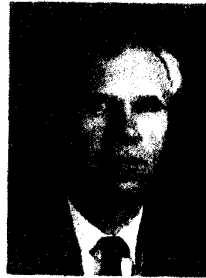


**T. LEE BISHOP, JR.**  
 District 18-C  
*Cabinet Sect-Treas.*

(Secretary)



**W. CLYDE DAVIS**  
 District Governor, 18-C  
 Council Vice-Chairman  
*1991-1992*



**JAMES LAPHAM**  
 District 18-C  
*1991-1992*



**TROY L. PULLIN**  
 District Governor, 18-C  
 Council Vice-Chairman  
*1992-1993*



**ALTON B. CHURCHWELL**  
 District 18-C  
*Cabinet Sect/Treas*  
*1992-1993*



JOEL D. GOINGS  
District Governor, 18-C  
Council Special  
Projects Chairman

1993-1994



ROYCE BOWLES  
District 18-C

*Cabinet Sect/Treas*  
1993-1994



M. CLARK LAMB, JR.  
District Governor, 18-C  
Council Treasurer

1994-1995



CHRIS SUMNER  
District 18-C

*Cabinet Sect/Treas*  
1994-1995



HERBERT HUGHES  
District Governor, 18-C  
Council Treasurer

1995-1996



CHRIS SUMNER  
District 18-C

*Cabinet Sect/Treas*  
1995-1996



**CHERYL G. MEADOWS**  
District Governor, 18-C  
Council Treasurer

*1996-1997*



**SHARON LAMB**  
District 18-C

*Cabinet Sect/Treas*  
*1996-1997*



**TERRY ROUSE**  
District Governor, 18-C  
Council Treasurer

*1997-1998*



**ED JOHNSON**  
District 18-C

*Cabinet sect/Treas*  
*1997-1998*



**FRANK D. WOHRLEY**  
District Governor, 18-C  
Council Treasurer

*1998-1999*



**M. CLARK LAMB, JR.**  
District 18-C  
Cabinet Secretary-Treasurer

*1998-1999*



**DAVID O'SCOTT**  
District Governor, 18-C  
Council Vice Chairman

1999-2000



**JIM SELLERS**  
District 18-C  
Cabinet Secretary

1999-2000



**CINDY FREEMAN**  
District 18-C  
Cabinet Treasurer