

# **DISTRICT 18-F**



**BEN B. POOLE**  
District Governor, 18-F  
Council Treasurer

1990-91



**LEE CRONAN**  
District 18-F  
(Treasurer)

1990-91



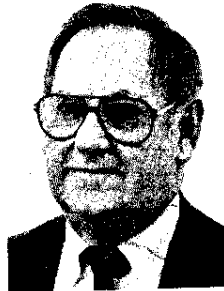
**EUGENE H. CARPENTER**  
District 18-F  
(Secretary)

1990-91



**CHIP JERNIGAN**  
District Governor, 18-F  
Council International

1991-1992



**EUGENE H. CARPENTER**  
District 18-F  
(Secretary)

1991-1992



**JIMMY WILLIAMS**  
District 18-F  
(Treasurer)

1991-1992



**C. COKE GEDDINGS**  
District Governor, 18-F  
Council State  
Convention Chairman

1992-1993



**DR. BEVERLY A. ROBERTS**  
District 18-F  
Secretary

1992-93



**DAVID C. CREWS**  
District 18-F  
(Treasurer)

1992-93



**CAROLYN S. IRVIN**  
District Governor, 13-F  
Council Treasurer

1993-94



**DAVID C. CREWS**  
District 18-F  
(Treasurer)

1993-94



**J. RANDALL HALL**  
District 18-F  
(Secretary)

1993-94



**BILL E. SHURLING**  
District Governor, 18-F  
Council Special  
Project Chairman

1994-95



**H. SAMUEL ATKINS, JR.**  
District 18-F  
(Secretary)

1994-95



**WILLIAM G. BROSS**  
Treasurer

1994-95



**DR. BEVERLY A. ROBERTS**  
District Governor, 18-F  
Council Secretary

1995-96



**EDWARD L. SHIRLEY**  
District 18-F  
(Secretary)

1995-96



**JON M. WINTERS**  
District 18-F  
(Treasurer)

1995-96



**CAROLYN IRVIN**  
District Governor, 18-F  
Council Special  
Projects Chairman

1996-97



**JOYCE SHURLING**  
District 18-F  
(Secretary)

1996-97



**JON M. WINTERS**  
District 18-F  
(Treasurer)

1996-97



**ROBERT J. YONCHAK**  
District Governor, 18-F  
Council Secretary

1997-98



**CAROLYN IRVIN**  
District 18-F  
(Secretary)

1997-98



**JON M. WINTERS**  
District 18-F  
Treasurer

1997-98



**ANN R. STUMP**  
District Governor, 18-F  
Council International  
Convention Chair

*1998-1999*



**HAROLD R. STUMP**  
Cabinet Secretary

*1998-1999*



**MARTHA FALLAW**  
Cabinet Treasurer

*1998-1999*



**JON M. WINTERS**  
District Governor, 18-F  
Council State  
Convention Chairman

*1999-2000*



**DR. BEVERLY A. ROBERTS**  
District 18-F  
Cabinet Secretary

*1999-2000*



**CHARLES LAMB**  
District 18-F  
Cabinet Treasurer

*1999-2000*